



# 2016

---

# ANNUAL REPORT

---



**Physician  
Health Program**  
British Columbia



# Table of Contents

**GOVERNANCE STRUCTURE** ..... 3

**REPORT ON ACTIVITIES** ..... 5

**FINANCIAL RESULTS** ..... 7



## GUIDE TO INTERACTIVE FEATURES



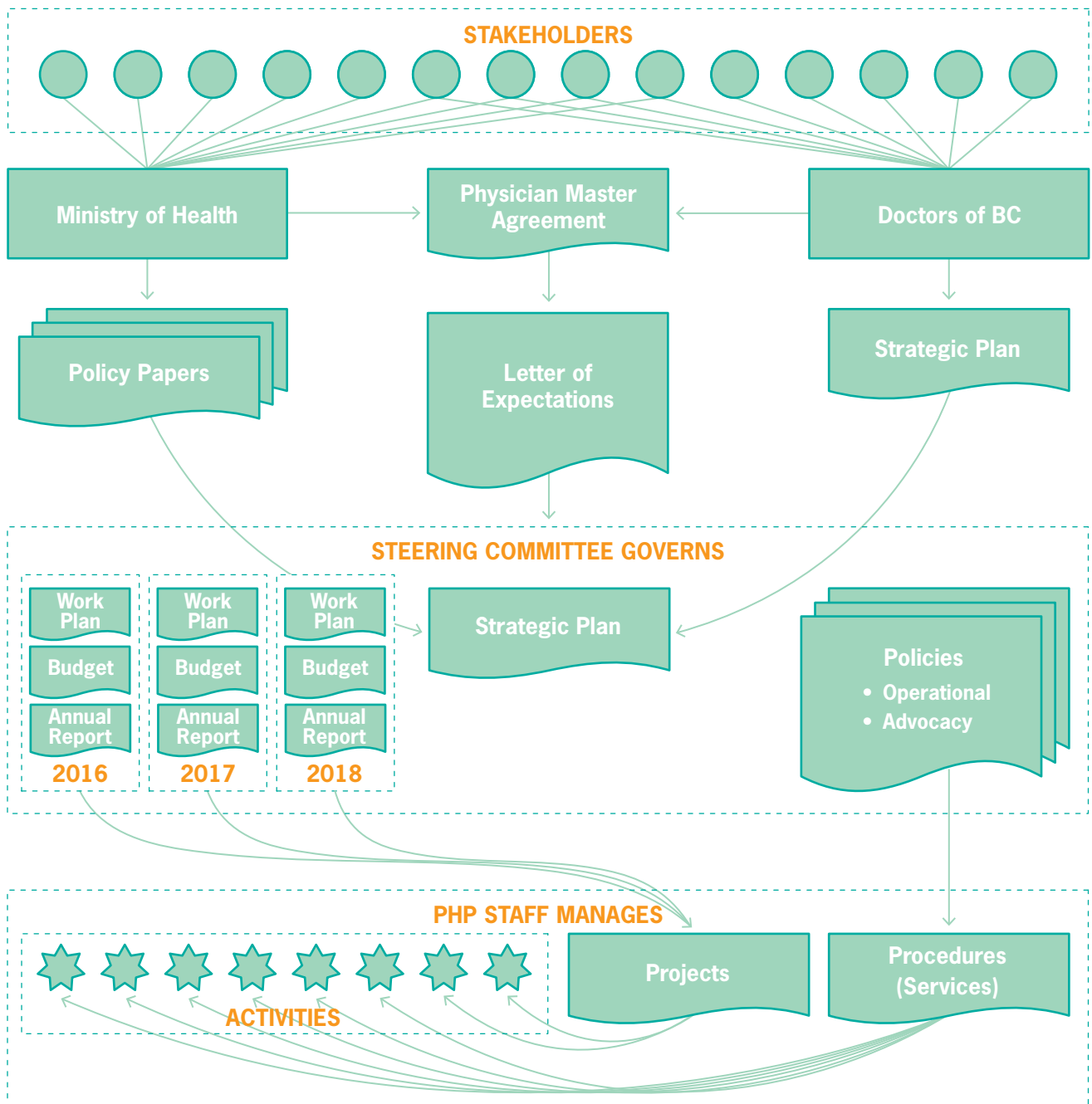
Click the home button to bring you to the table of contents where you can ***jump to any page by clicking on it***



Back one page | Advance one page



# Governance Structure





Funding and governance of the Program changed officially on April 1, 2016. The Physician Master Agreement (negotiated periodically between the Government of BC and the Doctors of BC) sets out the terms of the Program's funding. The Letter of Expectations serves as the terms of reference for the Steering Committee that governs the Program in a manner consistent with the oversight of other collaborations between the two parties.

The Steering Committee is tasked with producing a multi-year strategic plan for the Program that aligns with the priorities of the funders. It must also approve annually a work plan and budget for the upcoming year, and a report of the previous year's activities, along with policies that serve as decision-making guides for staff in the day-to-day operation of the Program.

Based on the written output of the Steering Committee, the Program staff produce and carry out procedures that enact the policies the committee has approved. They also manage projects that improve the Program's operations according to the priorities set out annually in the work plan.

To ensure continuity during the period of transition to the new structure, the funders each agreed to nominate two of the four remaining members of the previous committee to initial terms on the new six-member committee. Each funder nominated an additional member, and selected a co-chair.

The new, six-member, co-chaired committee had its first meeting on June 20th, and met again on August 22nd, September 26th and November 28th. During these four meetings the new Committee approved a work plan and budget for 2017, a report of activities for 2015, and a revised strategic plan for the period of 2017-2019.

A project to redesign the Program's website was also approved, and the new site will be launched in the first quarter of 2017.

## Committee members

[Charuka Maheswaran](#)  
Doctors of BC Co-Chair

[Doug Blackie](#)  
Ministry of Health Co-Chair

[Yusuf Bawa](#)  
Doctors of BC Representative

[Ashok Krishnamoorthy](#)  
Doctors of BC Representative

[Selena Lawrie](#)  
Ministry of Health Representative

[Dorothy Williams](#)  
Ministry of Health Representative

## Program Staff

Executive Director  
[Andrew Clarke](#)

Program Physicians  
[Kathleen McGarvey](#)  
[Doug McGhee](#)

Clinical Coordinators  
[Carol Faris](#)  
[Deborah Berrelkamp](#)  
[Lucy McCullough](#)  
[Roxanne Joyce](#)

Senior Administrative Assistant  
[Karen McNaught](#)



# Report on Activities

PRINCIPAL SERVICE PROVIDED	CALENDAR YEAR <sup>1</sup>			
	2016	2015	2014	2013
<b>Number of cases</b>				
Counselling	<b>359</b>	330	312	342
Family Doctor Connection	<b>186</b>	161	183	136
Occupational Health Assessment	<b>79</b>	83	60	60
Peer Support	<b>33</b>	37	19	30
Assistance Approaching a Colleague	<b>27</b>	28	21	10
Workplace Relationship Improvement	<b>6</b>	3	9	23
Assistance Returning to Work	<b>12</b>	16	11	6
<b>TOTAL</b>	<b>702</b>	658	615	607

PRINCIPAL ISSUE AT INTAKE <sup>2</sup>				
	2016	2015	2014	2013
<b>Proportion of cases<sup>3</sup></b>				
Individual Mental Health <sup>4</sup>	<b>55%</b>	54%	51%	48%
Family and Non-Occupational Relationships	<b>28%</b>	24%	23%	30%
Occupational Issues	<b>12%</b>	15%	19%	18%
Physical Health Issues	<b>4%</b>	3%	2%	4%
Other Issues	<b>2%</b>	3%	4%	2%

- 1 In 2015 the Program changed its year end from March 31 to December 31. A report reconciling the previous and current statistical presentations is available upon request from the program staff.
- 2 Excludes cases where the principal service provided was connection to a family physician.
- 3 Proportions may not sum to 100% because of rounding for presentation.
- 4 Including substance use.



### CAREER STAGE OF ELIGIBLE PERSON

Proportion of cases	CALENDAR YEAR			
	2016	2015	2014	2013
Practicing physician	56%	59%	54%	61%
Resident/Fellow	23%	22%	28%	25%
Medical student	19%	17%	16%	13%
Retired	3%	2%	1%	1%

### RELATIONSHIP TO ELIGIBLE PERSON

Proportion of cases	CALENDAR YEAR			
	2016	2015	2014	2013
Physician	90%	92%	89%	87%
Spouse	7%	6%	7%	9%
Child	2%	1%	2%	3%
Other relationship	1%	0%	1%	1%



Overall case volume increased by approximately seven percent.

Distribution of cases by principal service provided, principal problem presented, career stage of eligible person, and relationship to eligible person all remained approximately constant.



# Financial Results

## REVENUE

# \$1,436,618

## EXCESS



	Twelve months ending 2016-12-31	Nine months ending 2015-12-31	Twelve months ending 2015-03-31	Twelve months ending 2014-03-31
<b>Revenue</b>	<b>1,436,618</b>	909,393	1,214,488	1,214,117
<b>Expenses</b>				
Clinical Services	<b>1,036,500</b>	629,214	736,375	601,645
Outreach Services	<b>0</b>	105,793	204,025	195,525
Administration	<b>385,406</b>	225,182	262,018	314,730
Excess (deficiency)	<b>14,712</b>	(50,896)	12,070	102,217
Net assets, beginning of period	<b>470,151</b>	521,047	508,977	406,760
Net assets, end of period	<b>484,863</b>	470,151	521,047	508,977

Copies of the auditors' report and full audited financial statements are available upon request to the Executive Director.

As per the Physician Master Agreement, the program's funding increased during 2016 from a total of 1.2 million per year (to the end of March, 2016) to 1.5 million per year (for the period of April 1, 2016 to March 31, 2017). Funding from the CPSBC ceased as of March 31, 2016. The Program is now funded equally by the Government of BC and the Doctors of BC.



**Physician Health Program**

Administrative Office  
Suite 600 – 1665 Broadway West  
Vancouver, BC V6J 1X1

[www.physicianhealth.com](http://www.physicianhealth.com)



**Physician  
Health Program**  
British Columbia

---