



Physician
Health Program
British Columbia

2015 ANNUAL REPORT

Physician Health Program of BC





Table of Contents

BACKGROUND.....	3
MANDATE	3
GOVERNANCE STRUCTURE	4
REPORT ON ACTIVITIES	5
FINANCIAL RESULTS	6
STEERING COMMITTEE MEMBERSHIP	7



GUIDE TO INTERACTIVE FEATURES



Click the home button to bring you to the table of contents where you can **jump to any page by clicking on it**



Back one page | Advance one page





Background

1979	2006	2009	2011	2012	2013	2015
Program founded	PMA: expanded funding Non-profit society incorporated	24/7 access, free counselling	Operational review	Operational management assumed by Doctors of BC Non-profit society dissolved Steering Committee formed	Assistance provider changed to Morneau Shepell	Fiscal year end changed to December 31 CPSPC withdraws from funding and governance of the program Doctors of BC and Ministry of Health continue in partnership

Mandate

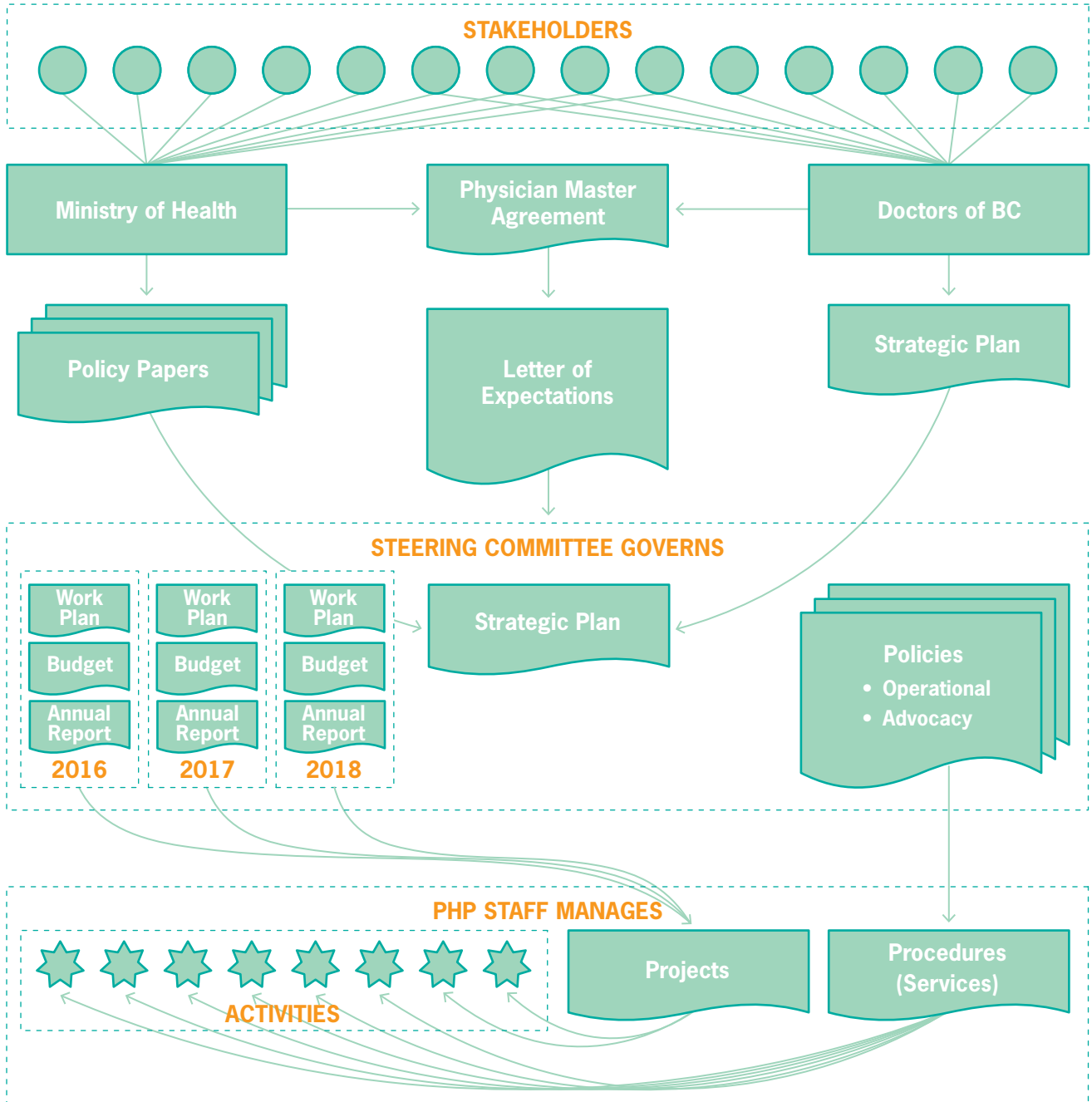
The Physician Health Program of BC helps physicians and their families by:

- Fostering an environment of health and wellness;
- Offering prompt personalized assistance with a variety of issues, including:
 - Physical health,
 - Mental health and addictions,
 - Difficult relationships;
- Advocating for the individual and collective health of physicians.

The range of services provided includes clinical counselling, assistance with attachment to a family physician, and occupational health assessments.

A variety of outreach services are also available, including presentations and small-group learning facilitation.

Governance Structure





Report on Activities

Unlike in previous annual reports, activities are grouped by calendar year. A report reconciling the previous and current presentations is available upon request from the Executive Director.

PRINCIPAL SERVICE PROVIDED	CALENDAR YEAR		
	2015	2014	2013
Number of cases			
Counselling	330	312	342
Family Doctor Connection	161	183	136
Occupational Health Assessment	83	60	60
Peer Support	37	19	30
Assistance Approaching a Colleague	28	21	10
Workplace Relationship Improvement	3	9	23
Assistance Returning to Work	16	11	6
TOTAL	658	615	607

PRINCIPAL ISSUE AT INTAKE*	CALENDAR YEAR		
	2015	2014	2013
Proportion of cases			
Individual Mental Health	54%	51%	48%
Domestic / Non-occupational relationship	24%	23%	30%
Occupational Issues	15%	19%	18%
Physical Health	3%	2%	4%
Other	3%	4%	2%

*Excludes cases where the principal service provided was connection to a family physician.

CAREER STAGE OF ELIGIBLE PERSON	CALENDAR YEAR		
	2015	2014	2013
Proportion of cases			
Practicing physician	59%	54%	61%
Resident/Fellow	22%	28%	25%
Medical student	17%	16%	13%
Retired	2%	1%	1%

RELATIONSHIP TO ELIGIBLE PERSON	CALENDAR YEAR		
	2015	2014	2013
Proportion of cases			
Physician	92%	89%	87%
Spouse	6%	7%	9%
Child	1%	2%	3%
Other relationship	0%	1%	1%

Financial Results

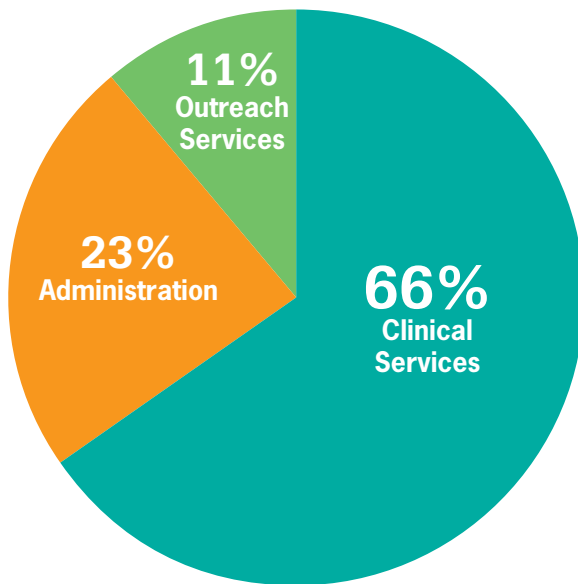
REVENUE

\$909,393

EXCESS (DEFICIENCY)



EXPENSES



NET ASSETS, BEGINNING OF PERIOD

\$521,047

NET ASSETS, END OF PERIOD

\$470,151

	Nine months ended 2015 December 31	Twelve months ended 2015 March 31	Twelve months ended 2014 March 31
Revenue	909,393	1,214,488	1,214,117
Expenses			
Clinical Services	629,214	736,375	601,645
Outreach Services	105,793	204,025	195,525
Administration	225,182	262,018	314,730
Excess (deficiency)	(50,896)	12,070	102,217
Net assets, beginning of period	521,047	508,977	406,760
Net assets, end of period	470,151	521,047	508,977

Copies of the auditors' report and full audited financial statements are available upon request to the Executive Director.



Steering Committee Membership

Representing the Doctors of BC

Dr. Shao-Hua Lu

Representing the Ministry of Health

Mr. Doug Blackie

Representing the College of Physicians and Surgeons

Dr. Ailve McNestry

Member at Large

Dr. Yusuf Bawa

Member at Large

Dr. Dorothy Williams





Physician Health Program

Administrative Office

Suite 600 – 1665 Broadway West

Vancouver, BC V6J 1X1

www.physicianhealth.com